



AFRICAN DREAMS

CUSTOMIZED AFRICAN PHOTO SAFARIS

*If colorful landscapes, incredible wildlife encounters and fascinating people are what you are looking for,
Africa is your ideal destination.*



THE FINEST PHOTO SAFARI EXPERIENCE ON EARTH, ALONG WITH A PASSIONATE IDEOLOGY OF GIVING
BACK TO THE LAND WE LOVE AND SERVE.

AFRICA

NAMIBIA

11Days

Embark on your magical journey experiencing all this beautiful country has to offer.
NAMIBIA is the smile of AFRICA.

INCLUDED:

- Meet and greet at airport
- Drop off at airport
- Accommodation
- Activities
- All meals and drinks
- Entrance fees
- Private tour guide
- Global Rescue insurance

EXCLUDED:

- Gratuities
- Optional activities
- Personal items
- Alcoholic drinks





WHAT YOU NEED TO GO TO NAMIBIA

VISA

- » Canadians do not require a tourist visa to enter Namibia.
- » All travellers will need a passport valid for at least 90 days following your departure date from Namibia. We strongly recommend traveling with 6 months validity on your passport at all times.
- » Citizens of Canada can refer to www.passport.gc.ca for forms and instructions for new passport applications and Canadian passport renewals.
- » **Make sure your passport has blank VISA pages.** Most destinations, including Namibia, require that you have adequate un-used pages in your passport, allowing for any necessary stamps upon arrival and departure. We recommend that you have at least six free pages in the Visas section of your passport before any international travel. Canadian citizens can get extra passport pages added to their passports at www.passport.gc.ca.

HEALTH

- » We recommend that our guests take anti-malaria tablets prescribed by their physician or health clinic. The tablets are advisable all year round. The lodges provide mosquito repellent spray and mosquito nets.

CLIMATE

- » The classic period to visit Namibia is April, May, August, September, October dry season, when safari conditions tend to be at their best. However, the coastal desert areas, which are generally of most interest, have a completely different climate and are good year round. The climate in Namibia varies considerably across the country and a basic understanding of these differences can be critical to the trip building process. The temperature can vary from 0-40 degrees celcius.

ELECTRICITY

- » Socket outlets are largely the South African three round pin varieties, although you may also encounter European two pin sockets and British three rectangular pin sockets, of which all are 230V/50Hz. Most good lodges provide universal adaptors, although we recommend to bring your own.



DAY 1:

You will fly into **WINDHOEK, NAMIBIA**. Your personal tour guide will pick you up at the airport and take you to **HEINITZBURG HOTEL**, that is an old castle in **WINDHOEK**.

Take this day and just relax, get over your jet lag to be ready for the rest of your adventure the next morning. The booking is made on a BB basis, because it all depends on when you arrive. **(Lunch, dinner and drinks not included in the price)**. There is a restaurant on the premises that you can have lunch and dinner, so you do not have to leave the premises until the next day.





DAY 2/3/4: (533km)

After a very early breakfast, your tour guide will pick you up and continue to **ONGUMA**. You want to try and be there in time for lunch.

You will overnight at **THE FORT** at **ONGUMA**. **THE FORT** is unlike any other, the only one of its kind in **NAMIBIA**. It was built in exactly the right spot to give guests probably one of the best sunset views in the whole of **NAMIBIA**.

Experience the wildness of the bush in all its splendor. Partake in the sights and sounds that will stay with you for a long time.

Be constantly surrounded by raw beauty inside and out. Enjoy this lodge, it is very unique and you will enjoy just hanging out in your room that looks out on the waterhole in front of the lodge.

Go on a Sundowner drive in the afternoon and soak up this beautiful environment.

Upon return indulge in the African cuisine and the best South African wines.

Overnight at **THE FORT**





After a hearty breakfast at the lodge, you will jump on an open game drive vehicle with a experienced guide for your adventure of the day into the **ETOSHA NATIONAL PARK**.

ETOSHA is a 22 750 square kilometers wildlife sanctuary in **NAMIBIA**. The meaning of the word **ETOSHA** is place of dry water and refers to a flat pan of about 5000 square kilometers in the park. There are close to a 114 species of mammals in **ETOSHA**, including the Black Faced impala and the threatened Black and White Rhino.

There is definitely enough to keep you enthralled on a game drive.

This place is a photographer's dream.

Upon return, have lunch at the lodge and after relaxing a bit, you can sit in the hide to watch the animals at the waterhole.

After dinner, visit over a good liqueur or ask to be taken to your room so you can relax and enjoy your suite.

Overnight at **THE FORT**.





Today will be your last day in this beautiful environment. After breakfast do a bush walk with experienced guides. It will bring you closer to nature by exposing you to the intimate detail of the surroundings. It is the chance to exist for a period of time in the original, primitive atmosphere of the wilderness and to watch from a respective distance the intimate lives of wild animals of the African bush veld. Africa takes on a new perspective when you experience it on foot as the first explorers did. A bush walk is a unique physical, mental and spiritual adventure through nature. Experience the smell, sights and sound of the Namibian bush by conducting a early morning leisurely walk

Take the rest of the day to just relax and become one with nature or you can do another game drive into the park.

Overnight at **THE FORT**





DAY5/6/7: (340km) (133km through Etosha)

After a very early breakfast, approximately at 6.00am you and your tour guide will continue through the park to the southern gate where you will exit and continue to **MOWANI MOUNTAIN CAMP** in **DAMARALAND**. The gates open at 6.55am. Make sure to be at the gate when it opens.

We will ask the lodge to pack you a lunchpack so you can get through the park as soon as possible to make your way to **MOWANI MOUNTAIN CAMP** in time to still enjoy some daylight in this camp.

This is my favorite place in the whole world. In the heat, dust and stunning landscapes of Damaraland, there is a sanctuary called Mowani Mountain Camp. Dwarfed by massive ochre boulders, the camp is absorbed into the landscape, making it one with our shared history of life in this prehistoric land. Every soft curve or ragged edge frames the landscape in a different way, as if you are seeing for the first time, every time.

Overnight at **MOWANI MOUNTAIN CAMP**



Just want to mention that this suite now have windows and it is not a tent anymore, but still stunning and breathtaking.

After breakfast go on a game drive in search of the desert adapted elephants. You will get really close to them for great photo opportunities.

After lunch do the Twyfelfontein, Burn mountain and organ pipes excursion with your own guide.

Upon return, enjoy the fireplace and look up to the beautiful sky full off amazing stars.

Enjoy the African cuisine and good wines.

Overnight at **MOWANI MOUNTAIN CAMP**.



Today is your last day in this camp. Eat breakfast and visit the [DAMARA VILLAGE](#) nearby. Upon return, eat lunch and just be one with nature or go on a self guided walk. Enjoy and soak up this environment. You are going to miss it.

Enjoy your last dinner in this camp.

Overnight at [MOWANI MOUNTAIN CAMP](#)



DAY 8/9: (324km)

After a early breakfast you will continue to the coast and arrive at [DESERT BREEZE LODGE](#) before lunch. Have lunch in town and do any activities of your choice (**on own account**). During these two days you can do some horse riding, City tour, Moonvalley and welwitchia, climb Dune 7, Four wheeling in desert, camel rides, sky diving, boat tours, fishing, seals, aquarium and so much more.

Your tour guide will pick up a list of activities and you can discuss what you want to do during these two days. She will then arrange it for you.

Unfortunately we do not have enough time to go deeper into the desert. This is the only place where you will get the feel of being in the desert. If you want more luxury we will have to stay in town.

Swakopmund is a very interesting little town full of history. Eat dinner and lunch in town and make sure to dine at some of the seafood restaurants in town. They have the best seafood.

Overnight at [DESERT BREEZE LODGE](#).



DAY 10/11: (340km)

After a early breakfast, you will continue via Karibib and Omaruru to **MOUNT ETJO SAFARI LODGE**. Make sure to be there before lunch. Eat lunch and if possible I will arrange that you do some horse riding in the afternoon. You can also visit the local school or the dinosaur tracks. Mount Etjo Safari Lodge is located in the heart of the Okonjati Game Reserve. One of the first private Game Reserves established in Namibia and founded by world-renowned conservationist Jan Oelofse.

Home to over 8000 animals and a impressive variety of bird species the Okonjati Wildlife Sanctuary is a true Conservation Area, this historic lodge deservedly carries the name “Etjo”, meaning place of refuge. Mount Etjo Safari Lodge is where the most important Declaration towards Namibia's Independence was signed in 1989 (The Mount Etjo Declaration).

Experiencing Wildlife activities and Enjoying Nature on the Okonjati Game Reserve is memorable and everlasting , while enjoying exquisite cuisine and luxurious accommodation, Mount Etjo Safari Lodge is and remains one of the most favourite destinations to visitors from around the world.

After dinner continue to the lion feed. It is a very humble experience to see these amazing cats interact with each other.



After breakfast do a morning game drive on an open vehicle. This place have a abundance of game. The Game Drives provide a unique opportunity to observe, encounter and admire the great variety of species that roam the Okonjati Game Reserve. Nowhere else in Namibia will you see such a diversity of animals, ranging from birds to the rare Roan and Sable Antelope, Elephants, White and Black Rhino, Giraffes, Zebras and many many more.

After lunch just relax and start packing for your flight back home tomorrow.

Overnight at **MOUNT ETJO SAFARI NIGHT** for both nights.

DAY 12: (267km)

The tour guide will take you back to the airport. Make sure you arrive at least 3 hours in advance. That will depend what time you will leave the lodge.

“Thank you for choosing African Dreams Photo Safaris to be your guide and friend on this wonderful journey. Have a safe trip back home and we hope to see you again in the future.”

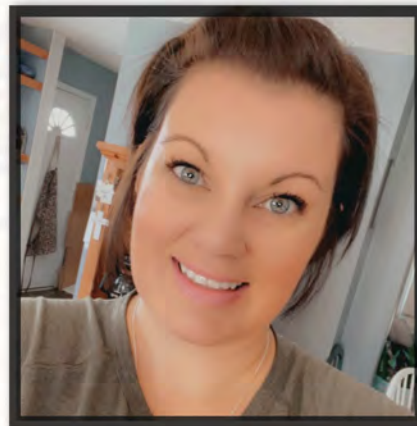
- Elaine



ELAINE & AL NESS

Owners

+1 (403) 877-2706
africandreams@telus.net



YOLANDI RUST

Marketing Director

+1 (306) 421-5184

www.africandreamsphotosafaris.com